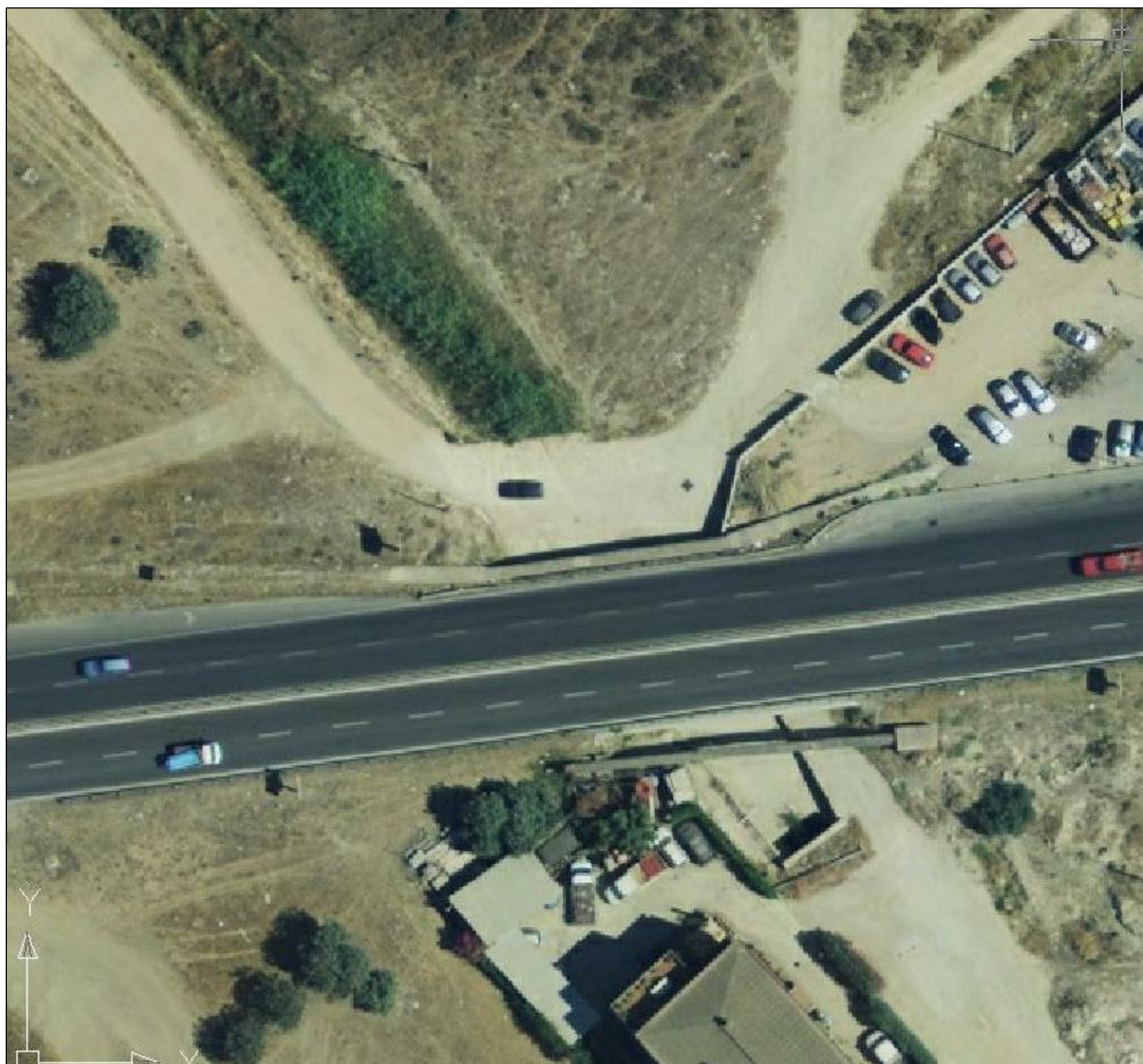


**SOTTOPASSO
CICLO PEDONALE
S.S 554 - RIO SALIU**

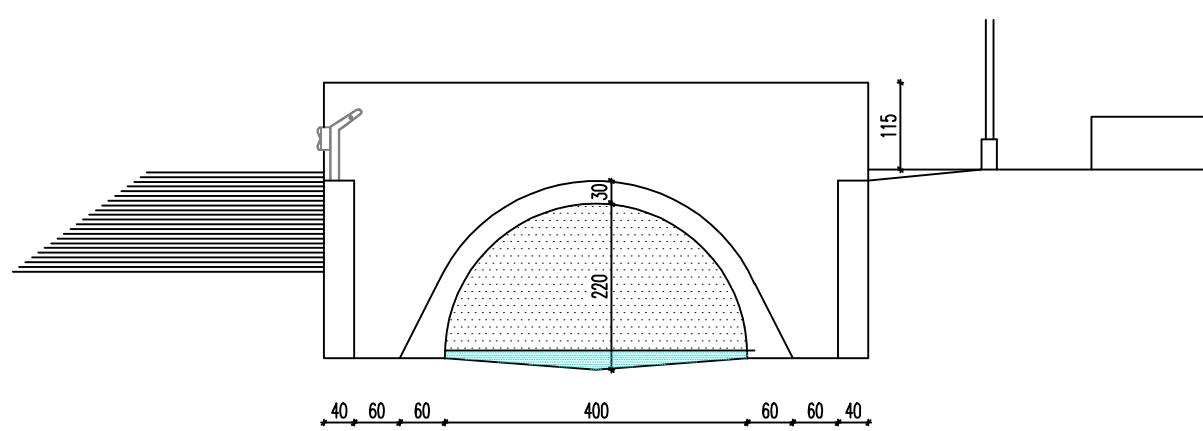


www.cagliariciclabile.it
cagliariciclabile@gmail.com

ELABORATI GRAFICI: INGG. FARIGU E. - ASONI G. - DEMURTAS B. G.



IMBOCCO CANALE COPERTO RIO SALIU



PONTE S.S.554 SU RIO SALIU

